

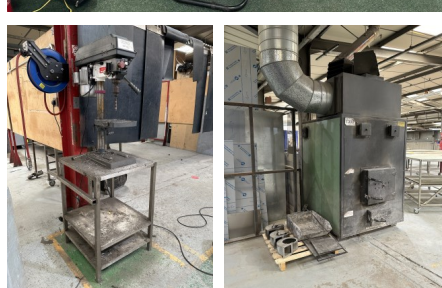
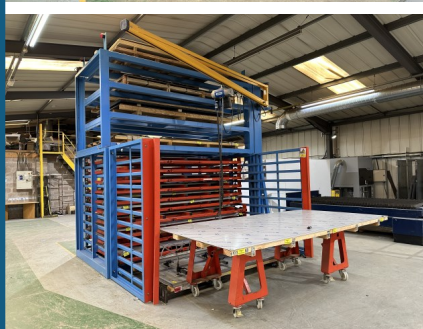
Unreserved ONLINE AUCTION



Upon instructions received from The Joint Administrators
of Shine Food Machinery Limited in Administration & a Major Finance Company

The Assets of Shine Food Machinery Limited A Stainless Steel Engineering & Fabrication Facility

- = 2019 Trumpf TruLaser 1030 Fiber, 2kw
- = Bystronic Xpert 150-3100 CNC Pressbrake, 2018
- = Bystronic Edwards Pearson PR-150 x 4100 Pressbrake, 2007
- = LVD PPEB 110/30 CAD-CNC Pressbrake
- = Pearson 1.25m x 3.5mm Guillotine
- = CML TB76 Pipe Bender
- = Rack-Storage (UK) Limited Compact Heavy Duty Sheet Storage System with Crane, 2017
- = Puma FG-20 Gas Forklift Truck
- = 2no. 40ft Shipping Containers
- = Selection of Machine Tooling, Grinders, Drills, Compressors, Welding & Setting Out Tables, Workbenches, Toolboxes, Power Tools, Consumables, Contents of the Stores, Stainless Steel Sheet & Tube Stock, Shelving, Materials Handling & Warehouse Equipment
- = Selection of I.T Equipment & Office Furniture



Auction Closes From: 10:00 - Tue 09 July 2024

Viewing: 09:30 to 12:00 - Mon 08 July 2024

Collection: 09:30 to 17:00 - Thur 11 July 2024 or
09:30 to 17:00 - Fri 12 July 2024
Certain Large Lots by Separate Appointment

Address: New Quay Rd, Newport NP19 4PL

GAVEL 
Auctioneers & Valuers

gavelauctioneers.com
0330 8080 113